

FOURTH AMENDMENT TO AGREEMENT

THIS IS A FOURTH AMENDMENT TO AGREEMENT ("Amendment"), dated the 4 day of ~~September~~ October, 2016, between:

LAKES BY THE BAY SOUTH COMMUNITY DEVELOPMENT DISTRICT, a local unit of special-purpose government established pursuant to Chapter 190, Florida Statutes, being situated in the Town of Cutler Bay, Miami-Dade County, Florida, and whose address is 5385 N. Nob Hill Road, Sunrise, Florida 33351 (the "District"), and

CDI ENTERPRISES, LLC, a Florida limited liability company, whose principal address is 3124 NW 16th Terrace, Pompano Beach, Florida 33064 (hereinafter "Contractor").

WHEREAS, the District entered into a Services Agreement (Holiday Landscape Lighting) with Contractor, dated October 25, 2011, as amended by the First Amendment to Agreement, dated September 24, 2012, the Second Amendment to Agreement, dated August 11, 2014, and the Third Amendment to Agreement, dated August 11, 2015 (collectively, the "Service Agreement"); and

WHEREAS, the District Board of Supervisors authorized the proper officials of District to enter into an amendment to the Service Agreement to replace the Scope of Work, as defined in the Agreement with a new holiday landscape lighting plan starting with the 2016-2017 holiday season and to add banners, all as described in the Holiday Lighting & Décor Proposal, dated August 18, 2016 – Revision #5 (the "Proposal"), which Proposal is attached hereto and made a part hereof as Exhibit A-4; and

NOW, THEREFORE, in consideration of the mutual promises and covenants contained herein, and other good and valuable consideration, the receipt and adequacy of which are acknowledged, the parties agree as follows:

Section 1. The foregoing recitals are true and correct and are hereby incorporated into this Amendment.

Section 2. The Scope of Work is hereby replaced with that which is set forth in the Proposal.

Section 3. Section 3 of the Service Agreement, entitled "Compensation" is hereby replaced with the following:

Section 3. Compensation. District shall pay to the Contractor the annual amounts set forth below, minus deductions for work/services removed from the Scope of Work for a particular year, due on the stated days and upon completion of the Scope of Work on an annual basis:

Contract Year	Annual Amount	Payable to Contractor
2016-17	\$50,102.00	50% by 10/24/16, 50% by 01/15/17
2017-18	\$50,102.00	50% by 10/15/17, 50% by 01/15/18
2018-19	\$50,102.00	50% by 10/15/18, 50% by 01/15/19

*unless program otherwise reduced pursuant to Section 14.

The Annual Amount is broken down as follows:

\$46,322.00 Total Cost for Holiday Lighting and Décor
 \$ 3,780.00 Total Cost for Banners

Contractor shall provide the District with an invoice upon completion of the Scope of Work for a particular year. All invoices are due and payable upon receipt. Charges remaining unpaid forty-five (45) days after receipt of the invoice shall bear interest at the rate of one percent (1%) per month. District, as a local government entity, is exempt from sales tax on this transaction. This Agreement is subject to the annual appropriation of funds by the District in accordance with the requirements of Chapter 190, Florida Statutes.

Section 4. The term of this Agreement, as set forth in Section 9 of the Service Agreement, is hereby extended through the 2018-19 holiday season.

Section 5. Section 20 of the Service Agreement, entitled "Public Records" is hereby replaced with the following:

Section 20. Public Records.

A. Contractor shall, pursuant to and in accordance with Section 119.0701, Florida Statutes, comply with the public records laws of the State of Florida, and specifically shall:

1. Keep and maintain public records required by the District to perform the services or work set forth in this Agreement; and
2. Upon the request of the District's custodian of public records, provide the District with a copy of the requested records or allow the records to be inspected or copied within a reasonable time at a cost that does not exceed the cost provided in Chapter 119, Florida Statutes, or as otherwise provided by law; and
3. Ensure that public records that are exempt or confidential and exempt from public records disclosure requirements are not disclosed except as authorized

by law for the duration of the contract term and following completion of the Agreement if the Contractor does not transfer the records to the District; and

4. Upon completion of the Agreement, transfer, at no cost to the District, all public records in possession of the Contractor or keep and maintain public records required by the District to perform the service or work provided for in this Agreement. If the Contractor transfers all public records to the District upon completion of the Agreement, the Contractor shall destroy any duplicate public records that are exempt or confidential and exempt from public disclosure requirements. If the Contractor keeps and maintains public records upon completion of the Agreement, the Contractor shall meet all applicable requirements for retaining public records. All records stored electronically must be provided to the District, upon request from the District's custodian of public records, in a format that is compatible with the information technology systems of the District.

B. Contractor acknowledges that any requests to inspect or copy public records relating to this Agreement must be made directly to the District pursuant to Section 119.0701(3), Florida Statutes. If notified by the District of a public records request for records not in the possession of the District but in possession of the Contractor, the Contractor shall provide such records to the District or allow the records to be inspected or copied within a reasonable time. Contractor acknowledges that should Contractor fail to provide the public records to the District within a reasonable time, Contractor may be subject to penalties pursuant to Section 119.10, Florida Statutes.

C. IF THE CONTRACTOR HAS QUESTIONS REGARDING THE APPLICATION OF CHAPTER 119, FLORIDA STATUTES, TO THE CONTRACTOR'S DUTY TO PROVIDE PUBLIC RECORDS RELATING TO THIS AGREEMENT/CONTRACT, THE CONTRACTOR MAY CONTACT THE CUSTODIAN OF PUBLIC RECORDS FOR THE DISTRICT AT:

**Governmental Management Services-South Florida, LLC
5385 N. Nob Hill Road
Sunrise, Florida 33351
TELEPHONE: (954) 721-8681
EMAIL: lhernandez@gmssf.com**

Section 6. In all other respects the original Service Agreement, dated October 25, 2011, the First Amendment to Agreement, dated September 24, 2012, the Second Amendment to Agreement, dated August 11, 2014, the Third Amendment to Agreement, dated August 11, 2015, and all amendments thereto are hereby ratified, reaffirmed and shall remain in full force and effect as provided by their terms.

IN WITNESS OF THE FOREGOING, the parties have set their hands and seals the day and year first written above.

CUSTOMER

**LAKES BY THE BAY SOUTH
COMMUNITY DEVELOPEMENT
DISTRICT**

ATTEST:



Secretary/Assistant Secretary

By 

Chairman

4 day of October, 2016

CDI ENTERPRISES, LLC

By: 

Kevin Long, Manager

7 day of September, 2016

Exhibit A-4



Christmas Designers

Masters Of Commercial Decorating

August 18, 2016

Lakes by The Bay CDD - Isles at Bayshore & Clubhouse

Juliana Duque

5385 N Hill Road

Sunrise, FL 33351

Phone: 954-721-8681

Email: jduque@gmssf.com

Reference: REVISION#5 Holiday Lighting & Décor – Isles at Bayshore & Clubhouse
21864 SW 93rd Pl
Cutler Bay, FL 33190

Dear Juliana:

Please find enclosed Christmas Designers Revision#5 Proposal New Contract to Take-over Existing Holiday Lighting & Décor 2016-2018 for Lakes by The Bay CDD - Isles at Bayshore & Clubhouse.

Should you have any questions after you review the enclosed, please contact us at 800-432-5139.

If everything meets with your approval, please sign the acceptance sheet and fax this back to us at 954-973-0914. We will generate the 50% deposit invoice and get you on our installation schedule. *Please see the "General Terms" page for important information regarding installation and takedown of decor and lighting.*

We at Christmas Designers look forward to being of service to you, for this upcoming holiday season.

Sincerely,

Joe Campbell

Joe Campbell

Christmas Designers

JC/JT

www.ChristmasDesignersfl.com

3124 NW 16th Terrace, Pompano Beach, FL, 33064 ♦ (800) 432-5139 ♦ (954) 973-4225



Christmas Designers

Masters Of Commercial Decorating

ISLES AT BAYSHORE & CLUBHOUSE
LAKES BY THE BAY CDD
Holiday Lighting & Décor
Revision#5 Proposal
New Contract to Take-over Existing 2016-2018

www.ChristmasDesignersfl.com

3124 NW 16th Terrace, Pompano Beach FL, 33064 ♦ (800) 432-5139 ♦ (954) 973-4225

The material contained herein is the property of Christmas Designers.
Reproduction, copying, or use without prior consent is strictly prohibited.
10000111 REV5 JT 8.182018

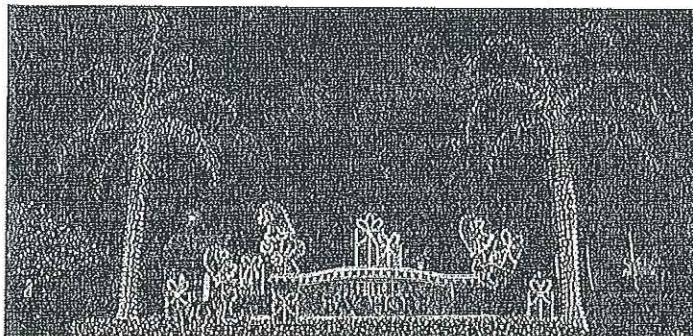
Isles at Bayshore & Clubhouse New Contract 2016-18 prop

Christmas Designers

Pompano Beach, FL

LAKES BY THE BAY CDD ISLES AT BAYSHORE & CLUBHOUSE
 REVISION#5 PROPOSAL 2016-2018 New Contract to Take-over Existing

AREA 1 – CENTER MEDIAN 216TH ST & 93RD PATH



For the one (1) Monument Sign at this Entrance, on top we will install one (1) reaching Elf and one (1) sitting Elf with package. There is also a Package Cluster Sign Enhancer on top and to finish the look we will outline with 60' of C7 12" spacing white cord light line with Warm White LED bulbs. On the ground around the Monument Sign, we will install one (1) standing Elf with package (on a riser) on the side and a total of four (4) single Packages (on risers).

1	Reaching Elf	\$ 840.00
1	Sitting Elf with Package	\$ 840.00
1	Package Cluster Sign Enhancer	\$ 475.00
1	Standing Elf with Package	\$ 885.00
4	Single Packages	\$ 840.00
60'	C7 12" spacing white cord w/Warm White LED bulbs	\$ 330.00
	Installation and Removal	\$ 815.00

For each of the nine (9) Royal Palms in the Center Median, we will wrap the trunk with eight (8) Warm White Commercial connect LED 70 light 4" spacing light sets and the boot with a halo containing four (4) Red Commercial connect LED 70 light 4" spacing light sets tightly wrapped without any spacing. The fronds will be lit with ten (10) Green LED Frond Sets.

For the hedges around the Monument Sign, we will scatter a total of fifty (30) Warm White LED Hedge Set.

72	LED 70 light 4" spacing light sets CC Warm White	\$ 1,944.00
36	LED 70 light 4" spacing light sets CC Red	\$ 972.00
90	LED Frond Sets Green	\$ 2,430.00
30	LED Hedge Sets Warm White	\$ 420.00
	Equipment Charge	\$ 720.00

For the Guardhouse, we will outline all fascia with totally 145' of C7 12" spacing green cord light line with Warm White LED bulbs.

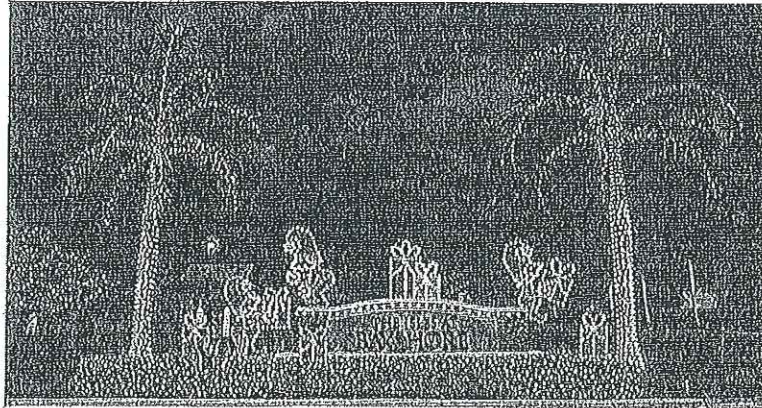
145' C7 12" spacing green cord w/Warm White LED bulbs \$ 870.00

TOTAL AREA 1

\$ 12,381.00

The material contained herein is the property of Christmas Designers.
 Reproduction, copying, or use without prior consent is strictly prohibited.
 10000111 REV5 JT 8.182016

AREA 2 - 216TH ST & 227TH ST



For the one (1) Monument Sign at this Entrance, on top we will install one (1) reaching Elf and one (1) sitting Elf with package. There is also a Package Cluster Sign Enhancer on top and to finish the look we will outline with 60' of C7 12" spacing white cord light line with Warm White LED bulbs. On the ground around the Monument Sign, we will install one (1) standing Elf with package (on a riser) on the side and a total of four (4) single Packages (on risers).

1	Reaching Elf	\$ 840.00
1	Sitting Elf with Package	\$ 840.00
1	Package Cluster Sign Enhancer	\$ 475.00
1	Standing Elf with Package	\$ 885.00
4	Single Packages	\$ 840.00
60'	C7 12" spacing white cord w/Warm White LED bulbs	\$ 330.00
	Installation and Removal	\$ 815.00

For each of the six (6) Royal Palms in the Center Median, we will wrap the trunk with eight (8) Warm White Commercial connect LED 70 light 4" spacing light sets and the boot with a halo containing four (4) Red Commercial connect LED 70 light 4" spacing light sets tightly wrapped without any spacing. The fronds will be lit with ten (10) Green LED Frond Sets.

For the hedges around the Monument Sign, we will scatter a total of fifty (50) Warm White LED Hedge Set.

48	LED 70 light 4" spacing light sets CC Warm White	\$ 1,296.00
24	LED 70 light 4" spacing light-sets CC Red	\$ 648.00
60	LED Frond Sets Green	\$ 1,620.00
30	LED Hedge Sets Warm White	\$ 420.00
	Equipment Charge	\$ 480.00

For the Guardhouse, we will outline all fascia with totally 145' of C7 12" spacing green cord light line with Warm White LED bulbs.

145' C7 12" spacing green cord w/Warm White LED bulbs

\$ 870.00

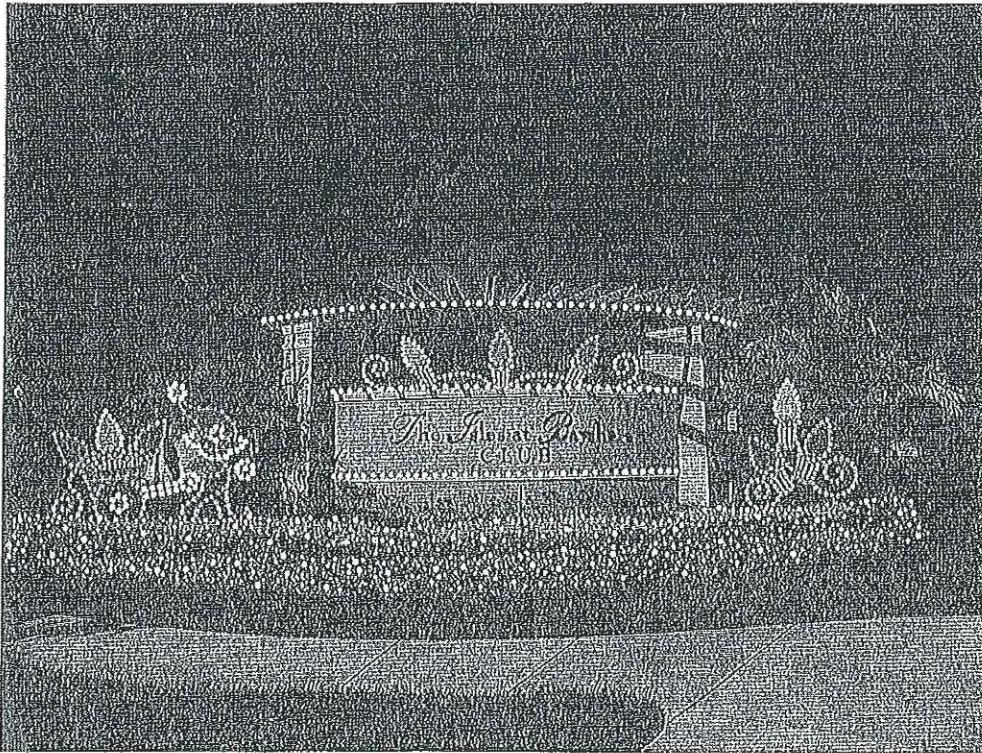
TOTAL AREA 2

\$ 10,359.00

The material contained herein is the property of Christmas Designers.
 Reproduction, copying, or use without prior consent is strictly prohibited.
 10000111 REV5 JT 8, 10/2016

ISLES AT BAYSHORE CLUBHOUSE

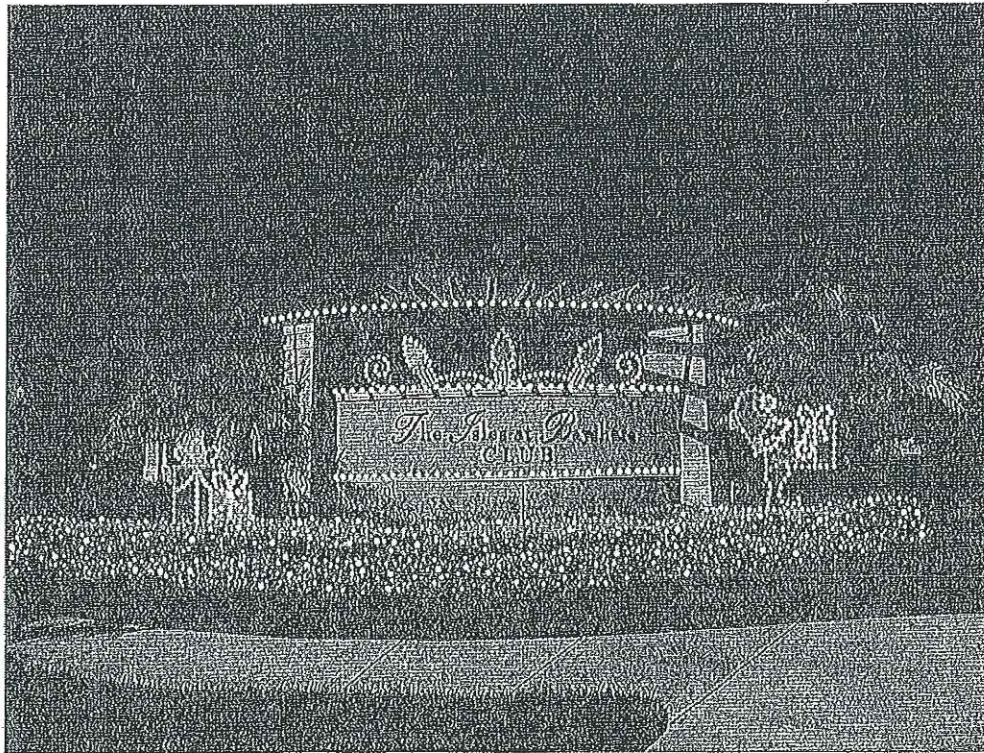
AREA 3 - EXIT & ENTRANCE MONUMENT WALLS



For the one (1) Monument Wall on Entrance side, we outline the Wood Trellis with 35' of C7 6" spacing green cord light line with Warm White LED bulbs and another 25' of C7 6" spacing green cord light line with Warm White LED bulbs along the bottom of the Monument Walls under The Isles at Bayshore Club. We will install one (1) 3 lightbulb Sign Enhancer Display. In front of the Monument Wall, we will install one (1) Elf with lightbulb cart and one (1) 3 Single bulb Display in a cluster with scrolls (both on risers). We will scatter the Hedge with a total of twenty (20) Warm White LED Hedge Sets.

60'	C7 6" spacing green cord w/Warm White LED bulbs	\$ 300.00
20	LED Hedge Sets Warm White	\$ 280.00
1	3 lightbulb Sign Enhancer	\$ 1,000.00
1	Elf with lightbulb cart	\$ 1,470.00
1	3 Single bulbs Displays w/Scrolls	\$ 600.00
	Installation and Removal	\$ 665.00

The material contained herein is the property of Christmas Designers.
Reproduction, copying, or use without prior consent is strictly prohibited.
10000111 REV6 JT 8.182016



For the one (1) Monument Wall on Exit side, we will install one (1) 3 lightbulb Sign Enhancer and outline the Wood Trellis with 35' of C7 6" spacing green cord light line with Warm White LED bulbs and another 25' of C7 6" spacing green cord light line with Warm White LED bulbs along the bottom of the Monument Walls under The Isles at Bayshore Club. In front of the Monument Wall, we will install one (1) Standing Elf with Blue Package and one (1) Package Cluster Display (both on risers). We will scatter the Hedge with a total of twenty (20) Warm White LED Hedge Sets.

60'	C7 6" spacing green cord w/Warm White LED bulbs	\$ 300.00
20	LED Hedge Sets Warm White	\$ 280.00
1	3 lightbulb Sign Enhancer	\$ 1,000.00
1	Standing Elf w/Blue Package	\$ 885.00
1	Package Cluster Display	\$ 475.00
	Installation and Removal	\$ 500.00

TOTAL AREA 3

\$ 7,755.00

Note: Please invest portion of the shading etc with package and package cluster as per email sent on 8/18/16

The material contained herein is the property of Christmas Designers. Reproduction, copying, or use without prior consent is strictly prohibited.
10000111 REV5 JT 8.182016

AREA 4 - 2ND ROUND-A-BOUT



For each of the four (4) Royal Palms, we will wrap the trunk with five (5) Warm White Cluster Sets and the boot with a halo containing three (3) Red Commercial connect LED 70 light 4" spacing light sets tightly wrapped without any spacing. The fronds will be lit with six (6) Green LED Frond Sets.

20	Cluster Sets Warm White	\$ 540.00
12	LED 70 light 4" spacing light sets CC Red	\$ 324.00
24	LED Frond Sets Green	\$ 648.00
	Equipment Charge	\$ 192.00

TOTAL AREA 4

\$ 1,704.00

The material contained herein is the property of Christmas Designers.
Reproduction, copying, or use without prior consent is strictly prohibited.
10000111 REV5 JT 8.182016

AREA 5 – CLUBHOUSE LEFT SIDE



For each of the three (3) Foxtail Palms, we will wrap the trunk with three (3) Warm White Commercial connect LED 70 light 4" spacing light sets and the boot with a halo containing two (2) Red Commercial connect LED 70 light 4" spacing light set tightly wrapped without any spacing. The fronds will be lit with six (6) Green LED Frond Sets. For the green Island Ficus Hedge, we will scatter with total of twenty (20) Warm White LED Hedge Sets.

For each of the two (2) Ligustrum Trees, we will scatter throughout the foliage with twenty (20) Green LED Scatter Sets.

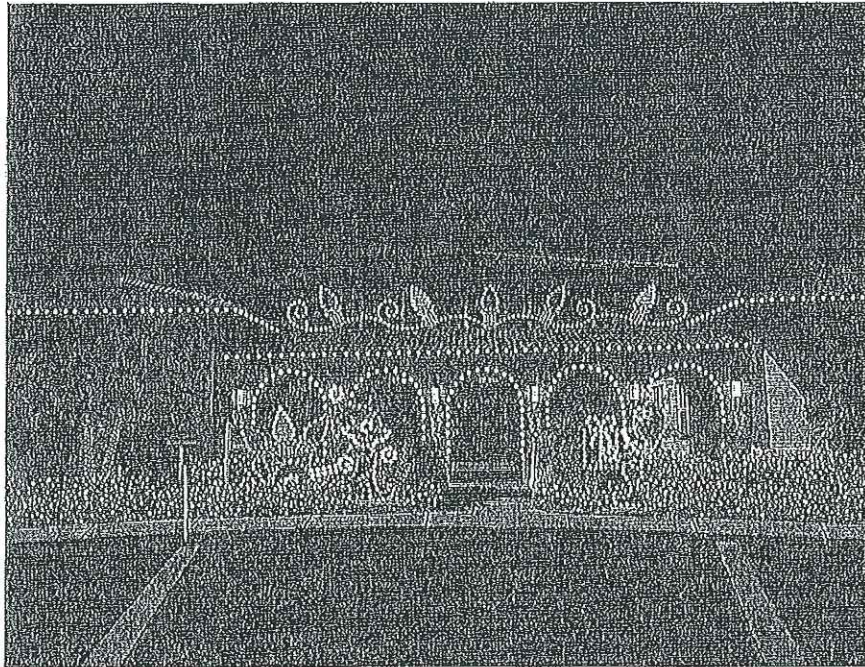
9	LED 70 light 4" spacing light sets CC Warm White	\$ 243.00
6	LED 70 light 4" spacing light sets CC Red	\$ 162.00
18	LED Frond Sets Green	\$ 486.00
20	LED Hedge Sets Warm White	\$ 280.00
40	LED Scatter Sets Green	\$ 860.00
	Equipment Charge	\$ 144.00

TOTAL AREA 5

\$ 2,175.00

The material contained herein is the property of Christmas Designers.
Reproduction, copying, or use without prior consent is strictly prohibited.
10000111 REV5 JT 8.182016

AREA 6 – FRONT OF CLUBHOUSE



On top of the Archways at Entrance of building, we will install one (1) 5 lightbulb Spray and greeting the residences there will be one (1) Elf with lightbulb cart (on a riser) and one (1) Standing Elf with package (on a riser).

1	5 lightbulb Spray	\$ 1,200.00
1	Elf with lightbulb cart	\$ 1,470.00
1	Standing Elf with Package	\$ 885.00
	Installation and Removal	\$ 735.00

For each of the twelve (12) Christmas Palms, we will wrap the trunk with two (2) Red Commercial connect LED 70 light 4" spacing light sets.

For each of the two (2) Ligustrum Trees, we will scatter throughout the foliage with twenty (20) Green LED Scatter Sets.

For each of the four (4) Robellini Palms, we will wrap the trunk with one (1) Red Commercial connect LED 70 light 4" spacing light set.

For the multiple Hedges in front of the Clubhouse, will scatter a total of eighty (80) Warm White LED Hedge Sets.

28	LED 70 light 4" spacing light sets CC Red	\$ 756.00
40	LED Scatter Sets Green	\$ 860.00
80	LED Hedge Sets Warm White	\$ 1,120.00

TOTAL AREA 6

\$ 7,026.00

The material contained herein is the property of Christmas Designers.
 Reproduction, copying, or use without prior consent is strictly prohibited.
 10000111 REV5 JT 8.182016

AREA 7 - CLUBHOUSE PERIMETER

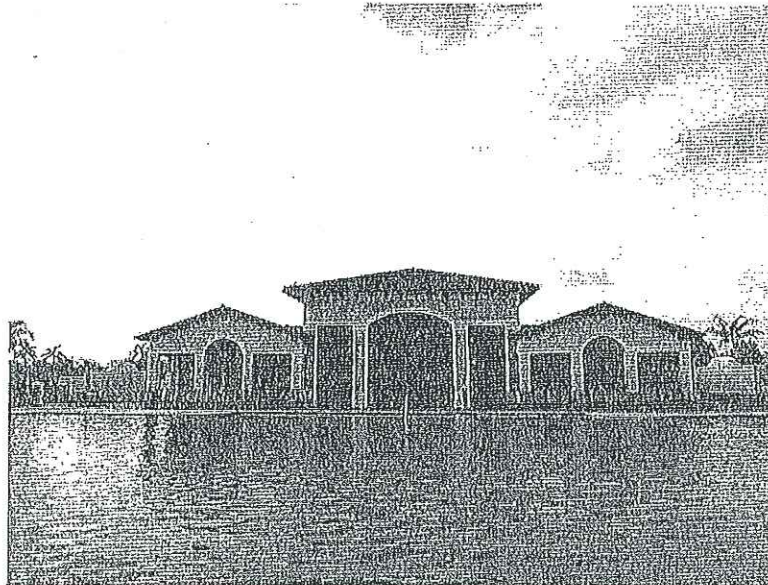
We will outline all fascia of the Clubhouse with totally 694' of C7 12" spacing green cord light line with Warm White LED bulbs.

On the light fixtures, we will install sixteen (16) 44" Sprays decorated in the Colors of the Holiday and a bow.

We will also install five (5) *Customer Owned* 14' Arches with C7 12" spacing white cord light line with Warm White LED bulbs.

694'	C7 12" spacing green cord w/Warm White LED bulbs	\$ 4,164.00
16	44" unlit Sprays decorated in COTH w/one Bow	\$ 1,440.00
5	14' Arches with C7 12" spacing white cord w/WW LED bulbs <i>Customer Owned</i> Installation and Removal	\$ 250.00
TOTAL AREA 7		\$ 5,854.00

AREA 8 - CLUBHOUSE POOL



In the middle, we will install one (1) *Customer Owned* 52' Arch with C7 12" spacing white cord light line with Warm White LED bulbs and on each side we will install one (1) *Customer Owned* 30' Arch with C7 12" spacing white cord light line with Warm White LED bulbs.

1	52' Arch with C7 12" spacing white cord w/WW LED bulbs	<i>Customer Owned</i>
2	30' Arches with C7 12" spacing white cord w/WW LED bulbs Installation and Removal	<i>Customer Owned</i> \$ 500.00
TOTAL AREA 8		\$ 500.00

The material contained herein is the property of Christmas Designers.
Reproduction, copying, or use without prior consent is strictly prohibited.
10000111 REV5 JT 8.182016

GENERAL TERMS
HOLIDAY LIGHTING & DÉCOR 2016-2018
ISLES AT BAYSHORE & CLUBHOUSE
LAKES BY THE BAY CDD

- Lighting may be installed beginning the second week of September with other jobs in the area. Please have tree trimming completed by the first week in September.
- All visual decorations will be installed when lighting is turned on or no later than December 1st of each season under contract unless other arrangements have been made.
- All Visual decorations will be removed no later than January 15th of each season under contract.
- All lighting will be disconnected the first week of January of each season under contract. (This does not mean actual removal of the lights)
- Removal of Holiday Lighting will begin the second week of January and be completed by the second week of February.
- All lighting will be serviced throughout the season from "turn on" through December 31th each season.



The material contained herein is the property of Christmas Designers.
Reproduction, copying, or use without prior consent is strictly prohibited.
10000111 REV5 JT 8.182016

RENTAL COST RECAP
LAKES BY THE BAY CDD ISLES AT BAYSHORE & CLUBHOUSE
HOLIDAY LIGHTING & DÉCOR 2016-2018

New Contract to Take-over Existing

Area 1 – Center Median 216 th St & 93 rd Path	\$ 12,381.00
Area 2 – 216 th St & 227 th St	\$ 10,359.00
Area 3 – Exit & Entrance Monument Walls	\$ 7,755.00
Area 4 – 2 nd Round-A-Bout	\$ 1,704.00
Area 5 – Clubhouse Left Side	\$ 2,175.00
Area 6 – Front of Clubhouse	\$ 7,026.00
Area 7 – Clubhouse Perimeter	\$ 5,854.00
Area 8 – Clubhouse Pool	\$ 500.00
Service of Lights – Light up through December 31 st per season	NO CHARGE
Subtotal	\$ 47,754.00
Multi-Year Discount	\$ 1,432.00
TOTAL RENTAL PER SEASON	\$ 46,322.00

New contract + Service
Grand Total

LEASE TERM:

Contract Term is three (3) seasons commencing August 15, 2016 and ending December 31, 2018.

PAYMENTS: Multiyear agreement payments to be made as follows: First season's payment of 50% due with acceptance of contract. Final 50% payment due upon completion of installation. Second and Third Seasons- payments of 50% due prior to September 1st. Final 50% payment due upon completion of installation of each season under contract. Balances over 30 days will incur a 1.5% finance charge per month.

ACCEPTANCE: All material is guaranteed to be as specified. All work to be completed in a workman like manner according to standard practices. Any alteration or deviation from the above specifications involving extra costs will be executed only upon written orders and will become an extra charge over and above this contract. All agreements contingent upon strikes, accidents, any acts of God or delays beyond our control. Owner will carry fire, tornado, hurricane (wind) and other necessary insurance. Our workers are fully covered by Worker's Compensation.

The above prices, specifications, terms and conditions are satisfactory and hereby accepted. You are authorized to do the work as specified. Payment will be made as outlined above. Once this Lease Agreement is signed by both parties it becomes a contract. ****By signing this agreement customer is acknowledging receipt of Customer Awareness Information Sheet and Electrical Specifications. Please see "General Terms" for important installation and takedown information. **This Revision#5 Proposal may be withdrawn if not accepted in 20 days.**

\$50,000

CUSTOMER:

By: _____
Authorized Signature *Printed Name, Title*

Date: _____

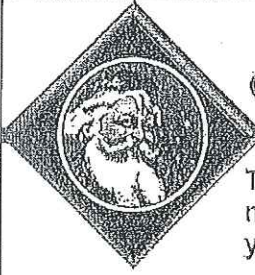
BILLING INFORMATION: _____
E-mail address

CHRISTMAS DESIGNERS/CDI ENTERPRISES, LLC:

By: _____
Authorized Signature *Printed Name, Title*

Date: _____

The material contained herein is the property of Christmas Designers.
 Reproduction, copying, or use without prior consent is strictly prohibited.
 10000111 REV5 JT 8.182016



CUSTOMER AWARENESS INFORMATION SHEET

The following is a list of items that Christmas Designers has compiled to make our customers aware of some very important information regarding your holiday program.

Tree/Hedge Trimming

In order for Christmas Designers to be able to install all of our customers' program in a timely manner, it is necessary that our customers have their trees trimmed prior to our being in their area to install the holiday program. It will be necessary to have your tree trimming completed by the first week of September. If there are holiday lights being installed in your hedges, they must be trimmed by November 1st.

Electrical Specifications

Christmas Designers provides electrical specifications with every Revision#5 Proposal for your holiday program to let you know what the electrical requirements are for the program that is being quoted. While electrical outlets may be visible in the area that is being quoted, there is no way to tell what else may be on the same circuit as those outlets. Your electrician is the only one that would be able to verify that there is sufficient power for the holiday program that is being quoted. Please have your electrician verify that there is enough power available for the holiday program. Christmas Designers would be happy to discuss any questions your electricians may have.

Servicing of Holiday Lights/Decor

At Christmas Designers we pride ourselves on our service to our customers. Service is provided from the time of "turn on" until December 31st. We have crews dedicated solely to the service of our holiday lights/decor. Even though our service crews are out on a regular basis, should a need for service arise, please call or e-mail us.

Service phone number (954) 973-4225, ext. 101

E-mail to: service@christmasdesigners.com

Trouble Shooting Guide:

Bubble Covers on Electrical Outlets

We recommend oversized bubble covers on all electrical outlets being used for your holiday program. Bubble covers aid in preventing the outlets from getting wet, which will cause the GFI to trip. Oversized bubble covers, rather than regular size, are used to accommodate extension cords.

GFI's (Ground Fault Interrupters)

A GFI, or ground fault circuit interrupter, is an automatic device that offers personal protection against electrical shock. The GFI will trip when the receptacle and/or holiday lights become wet, which will cause your lights to go out. To reset the GFI, simply press the red "reset" button. ****Customer is responsible for resetting GFI outlets.**

****Remember GFI's will not operate in rain or when sprinklers are running. GFI's will only reset when the entire electrical system is dry and the power / timer is on.**

Lights are on 24 hours a day

Some customers experience a situation where their holiday lights are remaining lit 24 hours a day. The main cause is the electrical infrastructure not being hooked up to a permanent timer or photocell.

Disconnecting/Removal of Holiday Lights

All holiday lights will be disconnected the first week of January unless otherwise agreed to. (This does not mean actual removal of the lights)

Removal of HOLIDAY LIGHTING & DÉCOR will begin the second week of January and be completed by the second week of February.

If you have any questions or need further clarification on this information, please call us at (800) 432-5139.

The material contained herein is the property of Christmas Designers.
Reproduction, copying, or use without prior consent is strictly prohibited.

10000111 REV5 JT 8.182016

Isles at Bayshore & Clubhouse New Contract 2016-18 prop

Christmas Designers

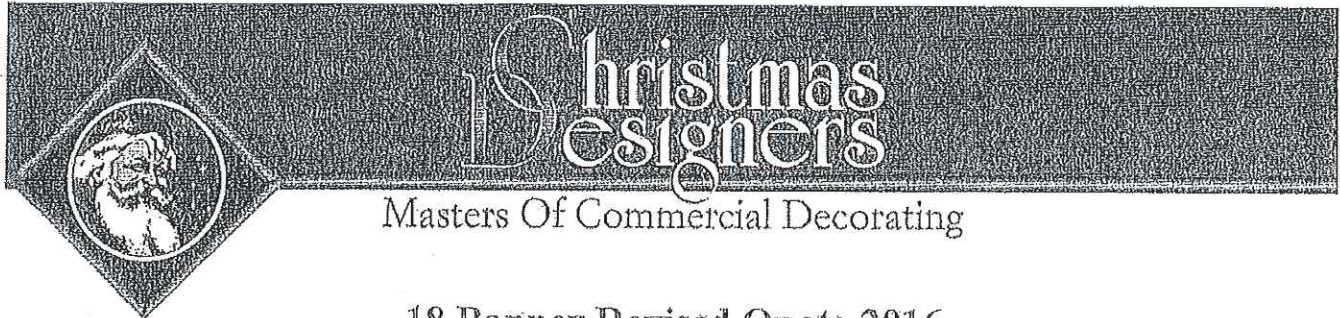
Pompano Beach, FL

**ELECTRICAL SPECIFICATIONS
HOLIDAY LIGHTING & DÉCOR 2016-2018
ISLES AT BAYSHORE & CLUBHOUSE
LAKES BY THE BAY CDD**

- 110-120 Constant voltage under load REQUIRED
- All Amperage quoted at actual draw
- CUSTOMER is responsible for providing 115 VAC power outlets within twenty-five (25') of lighting area and/or lighted décor
- Reasonable hardware and power cords up to twenty-five (25') in length are included
- Christmas Designers is NOT RESPONSIBLE for outages due to ground fault interrupters (GFI) or INSUFFICIENT ELECTRICAL REQUIREMENTS

<u>AREA 1 – CENTER MEDIAN 216TH ST & 93RD PATH</u>	
TOTAL AMPS AREA 1	39.08 amps
<u>AREA 2 – 216TH ST & 227TH ST</u>	
TOTAL AMPS AREA 2	36.33 amps
<u>AREA 3 – EXIT & ENTRANCE MONUMENT WALLS</u>	
TOTAL AMPS AREA 3	37.84 amps
<u>AREA 4 – 2ND ROUND-A-BOUT</u>	
TOTAL AMPS AREA 4	2.34 amps
<u>AREA 5 – CLUBHOUSE LEFT SIDE</u>	
TOTAL AMPS AREA 5	3.88 amps
<u>AREA 6 – FRONT OF CLUBHOUSE</u>	
TOTAL AMPS AREA 6	28.18 amps
<u>AREA 7 – CLUBHOUSE PERIMETER</u>	
TOTAL AMPS AREA 7	13.29 amps
<u>AREA 8 – CLUBHOUSE POOL</u>	
TOTAL AMPS AREA 8	1.95 amps


The material contained herein is the property of Christmas Designers.
Reproduction, copying, or use without prior consent is strictly prohibited.
10000111 REV5 JT 8.182016



18 Banner Revised Quote 2016
 LAKES BY THE BAY CDD
 ISLES AT BAYSHORE



18	30" x 60" Banners – Packages and Bulbs	\$ 1,350.00
18	Titan Econo Single Banner Sets	\$ 2,322.00
18	Banner care	\$ 108.00
TOTAL BANNERS		\$ 3,780.00



By: _____
 Authorized Signature

 Printed Name, Title

Date: _____